

trotec®

laser. marking cutting engraving

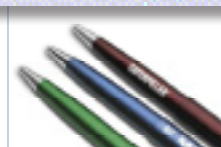
High volume laser marking - as easy as an office printer

→ ProMarker



www.troteclaser.com

setting
new
standards



Fast high volume marking
Highly economic & productive
As easy as an office printer

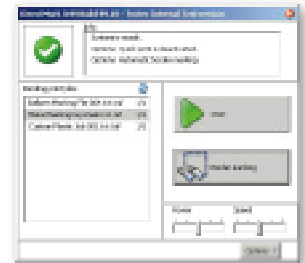


Reduce processing time by up to 80% Higher Speed = Higher Profit

Profit from the high marking speed of the ProMarker. Increase your productivity with the integrated Galvo laser and the revolutionary printer driver. Reduce the processing time of your orders by up to 80%.

As easy as an office printer DirectMark Printer Driver

The unique and revolutionary DirectMark printer driver allows you to operate the Promarker just like an office printer. There is no intermediate step required from job creation to the final result. There is also no complicated training for the operator required as the DirectMark printer driver is easy. Just Plug and Play.



Standard



High-Speed Galvo Laser

Increase your productivity with the industrially tested Galvo laser system. With up to 640 characters per second you can process big orders fast.

DirectMark Printer Driver

As easy to use as an office printer! With the DirectMark printer driver and its vectorisation function you can directly send your files from your graphic software to the ProMarker laser for marking your materials.

Time Saving with Material Database

The DirectMark printer driver provides an integrated material database. With the preset laser parameters you can save additional time during work preparation.

Options

Additional Lenses

Change the size of your working area from 70mm x 70mm to 180mm x 180mm by using different lenses. The lenses can easily be replaced at any time.



Focus Finder

Using a second pilot laser the correct working distance can be measured without use of a tool - ensuring accurate focus and clean and precise marking.



Maintenance-free laser source & minimal operating costs



Maximum Cost-Effectiveness

The high-quality construction design and engineering of the ProMarker results in a very long economic life-time. The laser source and the integrated air-cooling system are essentially maintenance free.



Minimum Maintenance

Trotec laser systems are designed and tested for industrial use. Key components are hermetically sealed and protected from dust and dirt. The integrated air-cooling and the maintenance-free laser source reduce maintenance for the ProMarker to a minimum.

Easy material positioning via laser pointer

Positioning of the work piece is easy and fast with the integrated laser pointer. It precisely shows the position of the marking as well as of edges and holes within the material. This function simplifies material handling and helps you save time during work preparation.

Standard

Exhaust Systems

An exhaust system is absolutely recommended for optimal operation of the laser. Trotec offers a variety of exhaust systems specifically matched for Trotec lasers.



z-Axis

Save time in setting the working distance with the optional z-Axis. This metal stand provides an electronic height adjustment to position the ProMarker accordingly to the material height. The z-axis comes in handy when work pieces are changed frequently.

Options

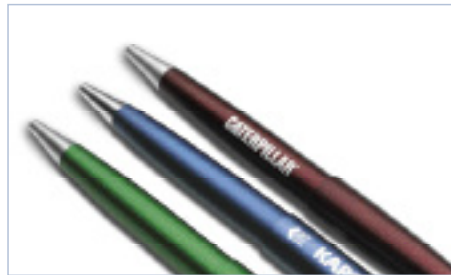
→ Technical details of the ProMarker

ProMarker

Dimensions of the laser head (W x D x H)	139 x 139 x 350 mm
Dimensions of the control unit (W x D x H)	440 x 215 x 450 mm
Working area	110 x 110 mm
Maximum marking speed	10 m/s (640 characters/sec)
Laser type	maintenance-free Yb fibre laser
Maximum output power	10 or 20 watt, depending on model
Wave length	1064 nm ±8 nm
Repetition rate	20 - 80 kHz
Focus diameter	approx. 45 µm
Electrical requirements	1/N/PE AC 230V, +/- 10%, 50/60 Hz
Power consumption	< 100 watt
Cooling system	Air cooling

→ **Trotec Laser - developed and built in Austria**

Send us your materials and samples: Our application engineers and sales support team will help find the most optimal laser system that matches your needs.



Company

Address